

# AVEDON & COLBY | SIGNATURE FIELD SHIRT

## A TEA-DYED BUSH POPLIN (A SIGNATURE FEATURE)

The Signature Field Shirt is constructed of a 100% long-staple cotton bush poplin that's distinguished by its tight, compact weave of high-twist yarn. Softened with a lightly brushed finish that won't weaken the fabric (unlike surface sanding, which abrades the weave and weakens the fabric), the inherent water repellency of the weave is further enhanced with a water-repellant finish.



## B RETRACTABLE BI-SWING BACK (A SIGNATURE FEATURE)

A generous, full-length bi-swing back extends from the top of each shoulder to the waist and expands to prevent pulling on the sleeves when arms are thrust forward. A unique, elasticized mesh panel inside the shirt reseats the bi-swing pleats to their original position to prevent ballooning and maintain a trim, snag-free profile.



## C MOISTURE-WICKING MESH

The elasticized 100% polyester mesh half lining on inside of the shirt back wicks sweat away from the wearer's skin and out to the cotton shirt material to accelerate evaporation and cooling on hot days.

## D DOUBLE-REVERSED UNDERARM GUSSET (A PATENT-PENDING SIGNATURE FEATURE)

A revolutionary new underarm gusset design allows for complete freedom of arm movement by preventing any pulling on the shirt's sleeve when arms are raised or rotated when shooting, fly casting or using binoculars.

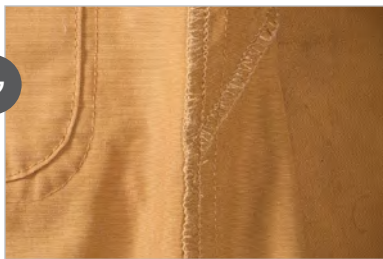
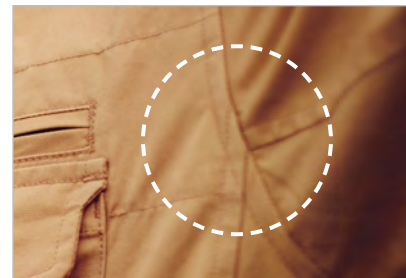


## E SIDE PANELS (A SIGNATURE FEATURE)

Tailored side panels replace traditional side seams (which are cheaper to sew) to separate the front and rear shirt panels to prevent transfer of torque so the shirt body does not twist or pull when climbing, crawling or pulling.

## F PIVOT SLEEVE (A SIGNATURE FEATURE)

Each sleeve seam follows the arm-motion pivot points to reduce cuff "pull-back" and waist "pull-out" while allowing arms to move freely.



## DRESS SHIRT CONSTRUCTION

All seams are single-needle stitched and surged to prevent any fraying of material.



## I HIDDEN BUTTON-DOWN COLLAR

Hidden buttons secure the shirt's collar tips to prevent them from flapping against the wearer's face and neck in high winds or when boarding a helicopter or bush plane.

## J SUN COLLAR (A SIGNATURE FEATURE)

A flip-up collar extension prevents sunburn on the back of the neck. Constructed with a military-style "zig-zag" stitch (a Signature Feature) to keep it rigid without adding additional thickness or weight, the sun collar stays up without curling or folding back on itself.

## K THROAT LATCH

A unique fold-back throat latch and concealed keeper button prevents wind from blowing down the wearer's neck on chilly days.



## L GENUINE BELLOWS POCKETS

Generous, functional (not decorative) box pleats on each pocket allow for expanded capacity.



## M ZIPPERED SECURITY POCKETS

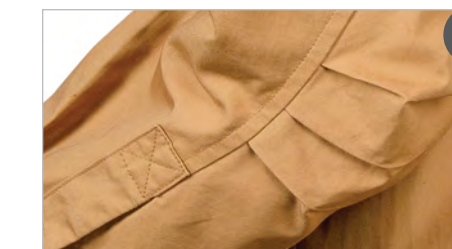
Concealed brass zippers secure two "drop behind" hidden pockets for safekeeping a cell phone, passport, cash, wallet or other valuables. Reinforcing cloth panels sewn on the inside of the shirt support the zippers to prevent sagging.



## N NOTCHED, TUCK-IN POCKET FLAP (A SIGNATURE FEATURE)

Button-secured front pocket flaps are designed to tuck into the open pockets to prevent snagging on a shotgun or rifle butt when hunting or shooting.

## O POCKET LOOP A convenient pocket loop keeps sunglasses readily accessible.



## P ARTICULATED ELBOWS (A SIGNATURE FEATURE)

A sequence of small pleats at the elbows help prevent the shirt cuffs from pulling back and binding when bending arms for shooting, fly casting or using binoculars.

## Q SLEEVE ROLL TABS (A SIGNATURE FEATURE)

Extra-log sleeve roll tab loops are hidden inside each sleeve to accommodate rolling up shirtsleeves without binding at the cuffs.



## R CONTOURED SHIRT BOTTOM

The gently contoured shirt bottom is shaped for comfort and style, whether tucked in or left out.

## H DRESS SHIRT FRONT PLACKET

The seven-button front placket features a horizontal lower buttonhole, which counters the natural stress of the button so it won't pull out. The "turn up" design of the placket bottom (not a simple fold-over) is a hallmark of fine shirt making.



## S HORN & UREA BUTTONS

Stronger and more durable than traditional horn buttons, the Signature Field Shirt buttons are molded from ground horn powder and urea-methanol resin to withstand harsh washing on rocks (when on safari) or high-temperature commercial shirt presses back home. Raised button rims protect the thread from abrasion.

